

Tank management

ANWIN

Introduction

The Scanjet ANWIN is a comprehensive software solution designed for tank level gauging and cargo monitoring. Running on Microsoft Windows, ANWIN software together with a marine type approved hardware provides a reliable high-performance platform. The ANWIN is a vital part of the Scanjet SURVEYOR system, used both on tankers and in industrial applications.

Application

The primary applications for Scanjet ANWIN are as a Cargo Monitoring System for tankers and as a Tank Level Gauging System for all types of ships.

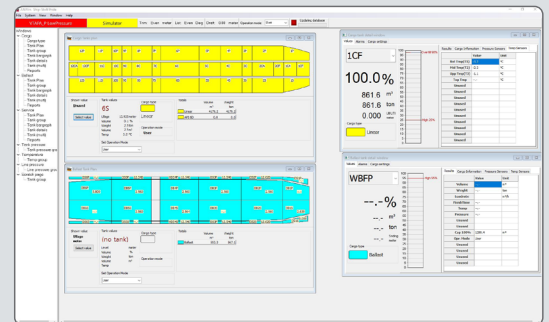
Scanjet ANWIN is a scalable and configurable visual display of tank monitoring data, customized to each vessel's needs. It gives operators access to real-time information on tank levels, pressures, temperatures and other field measurement devices or data received from other connected systems. ANWIN has a highly configurable alarm handling system, that can give you immediate notification on critical conditions.

The cargo management module of ANWIN supports up to 200 cargo types, where you can manage properties like density, temperature, and volume correction factors. The integrated volume tables will allow full conversion from level to weight. All major ASTM (API) tables are supported. This means that you are never dependent on the loading computer being on-line to see volumes and weights in your cargo monitoring system.

Scanjet ANWIN is also appreciated on small land-based and industrial applications with its user-friendly interface. The system is used on fuel depots and tank storage terminals.

Working principle

Scanjet ANWIN is an integrated solution with the Scanjet SURVEYOR System, working along with the Scanjet TANK CONTROL UNIT located inside the Scanjet SYSTEM CABINET. The ANWIN software is the main human-machine interface to the system and works in tight collaboration with the TANK CONTROL UNIT that operates on a real-time operating system. The TCU will carry out all the time critical calculations and alarm management, while the ANWIN provides the presentation view and interaction with the data.



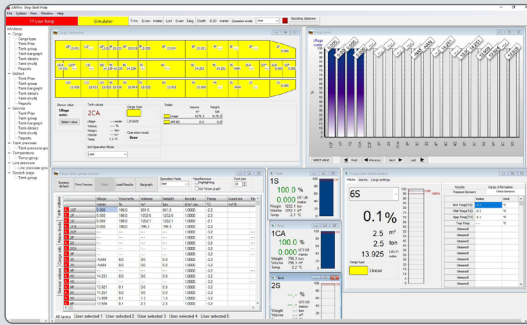
Optional features, integration, and accessories

Scanjet ANWIN runs on Windows operating system. We provide marine type approved workstations fully tested with ANWIN, together with marine type approved monitors. The Scanjet workstation hardware is fan-less and has a solid state memory. Scanjet also has touch-screen options.

ANWIN integration with Scanjet Pump and Valve Control System (PVCS) means a complete package that can monitor and control your cargo operations. You will get customized mimics and control of cargo related systems onboard from one trusted partner.

Scanjet REMOTE ACCESS solution integrates with the SURVEYOR System using a type approved firewall and using ship's satellite communication, allowing Scanjet to remotely troubleshoot, update and maintain the system, while ensuring full control and security for the vessel.

Scanjet ANWIN can optionally include Intact Stability and key loading computer functionality. This is in addition to the cargo library and full volume tables that always are included.



Benefits

Truly Marine: The ANWIN is tailored to the marine environment from the beginning, and you get full volume and weight data without being dependent on integrating with a loading computer.

User-Friendly Interface: Intuitive graphical displays and easy navigation enhance productivity for users of all skill levels. Short-sea shipping of liquid cargo, with frequent port calls, benefits from tabular overview of all cargo tank data, while you also want a graphical representation to visualize the situation onboard.

Enhanced Efficiency: ANWIN's real-time monitoring and alarm system enable swift responses to process conditions, minimizing downtime and optimizing operations.

Reliable Alerts: The robust alarm system ensures critical alerts are visible and acknowledged, enhancing safety and operational reliability.

Versatile and configurable: ANWIN can be tailored to project needs, making it suitable for a wide range of applications on ships and on land.

Issue: Scanjet-ANWIN-datasheet_v20240529

This document and its contents are subject to copyrights and other intellectual property rights owned by Scanjet Marine & Systems AB or any of its affiliates (jointly "Scanjet"). No part of this document may be copied, re-produced or transmitted in any form or by any means, or for any purpose, without Scanjet's prior express written permission. Information and services provided in this document are made as a benefit and service to the user, and no representations or warranties are made about the accuracy or suitability of this information and these services for any purpose.

© Scanjet Marine & Systems AB. All rights are reserved.