



INDUSTRIAL TANK CLEANING by SCANJET

ABOUT SCANJET

Based in Sweden, Scanjet is a global frontrunner in delivering intelligent tank level monitoring and gauging systems for marine and offshore applications. With strategically located facilities in key shipbuilding regions around the world.

Scanjet has built a stellar reputation for excellence in the maritime industry, as well as in land-based industry in application such as Pulp & Paper, Chemical, Bio Ethanol and many more industrial applications.

Their advanced solutions include tank cleaning, tank level monitoring, venting, gauging, and control.

From 2022, Scanjet is part of Alfa Laval

BUILT FOR HEAVY DUTY APPLICATION

SCANJET INDUSTRIAL

Scanjet Industrial is a leading provider of high-performance tank cleaning solutions designed for heavy duty industrial applications such as:

- Ethanol
 - Pulp & Paper
 - Chemical
 - Industrial Fermentation
 - Paint
 - Oil
- and other demanding industries.

In these environments, maintaining cleanliness is not only essential to product integrity but also critical to operational efficiency and safety.

SAFETY FIRST

Our advanced cleaning systems eliminate the need for human entry into tanks, ensuring a fully automated, no-man entry solution that keeps personnel out of hazardous environments.

With safety and reliability at the heart of our design philosophy, Scanjet's solutions are built to withstand harsh industrial conditions, making them the trusted choice for heavy-duty applications that prioritize both performance and personnel protection.



NO-MAN ENTRY

Automated cleaning solution
from Scanjet

ROBUST AND RELIABLE

EXTERNAL GEAR

Scanjet's tank cleaning solutions feature a robust external gearbox, keeping it separate from the cleaning fluid to prevent blockages caused by particles in recirculated media. This design ensures smooth, reliable operation even in challenging environments.

From small 2-meter tanks to large 125-meter crude oil storage tanks, our extensive range of rotary jet cleaners is built to handle various tank sizes. Our external gearbox systems offer flexible power options, including turbine, electrical, air, or hydraulic drives, tailored to customer preferences.

With Scanjet, you get robust, efficient tank cleaning designed for durability and seamless performance across industries.

WORKING PRINCIPLE

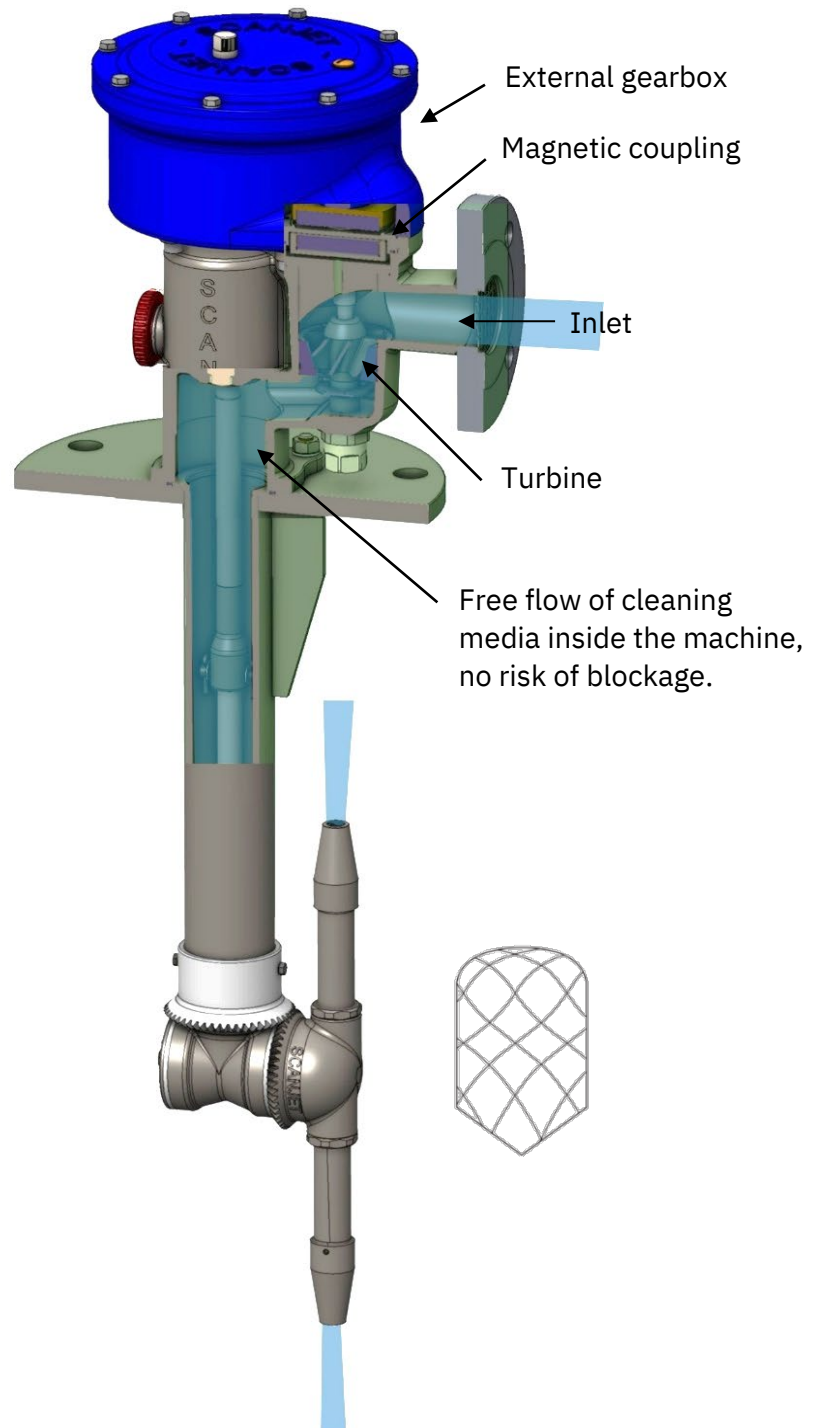
The cleaning liquid enters the machine, driving a turbine that connects to an external gearbox through a magnetic coupling.

Thanks to the open construction of the cleaning machine, there's a free flow of cleaning media, and since the gearbox is completely sealed off from the liquid, the risk of blockage is dramatically reduced.

This design ensures reliable, uninterrupted cleaning performance.

Scanjet machines is also available with

- Electrical drive
- Air drive
- Hydraulic drive



SUSTAINABILITY AT ITS BEST

WATER SAVING

Focusing on water conservation and time efficiency, upgrading from outdated static spray balls to advanced Rotary Jet Head tank cleaning machines offers significant benefits.

By making the switch, you can greatly reduce water usage while also cutting cleaning time. This change not only helps safeguard our precious water resources but also boosts operational efficiency by minimizing downtime



LESS CLEANING TIME = MORE TIME FOR PRODUCTION

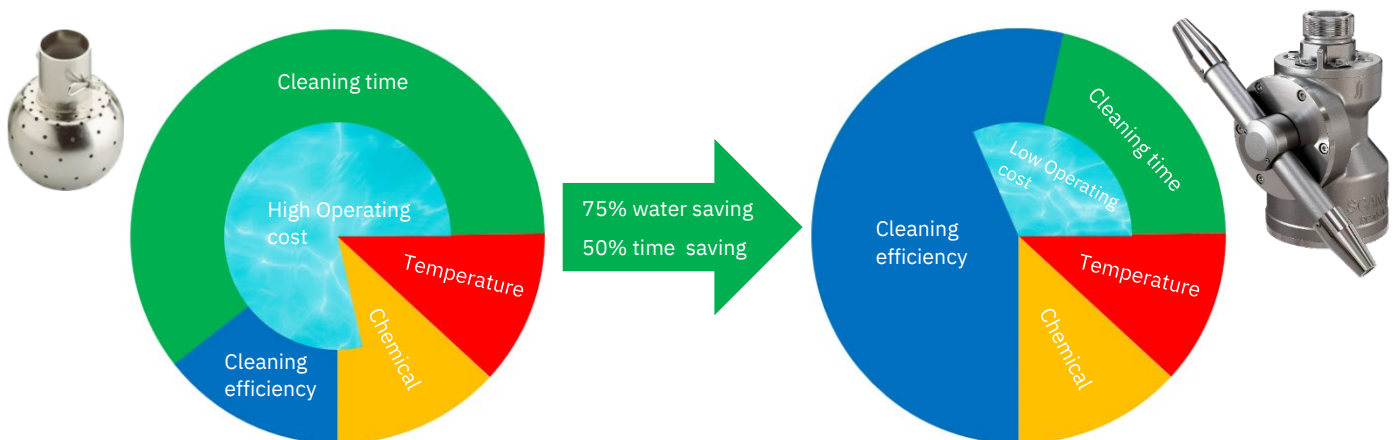
A Rotary Jet Head provides significantly greater cleaning efficiency compared to a static spray ball, delivering an impact force up to 100 times stronger.

Unlike static spray balls, which only clean areas directly hit by the jet and rely on inefficient cascading water flow for the rest of the tank, the Rotary Jet Head creates a high-impact cleaning pattern that thoroughly covers the entire surface. This powerful mechanical action reduces cleaning time, resulting in more production uptime, lower operating costs, minimized cross-contamination risks, and a cleaner, more sustainable process.



Key Benefits:

- Shorter cleaning time = More production time
- Reduced operating costs
- Minimizes risk of cross-contamination
- Cleaner and greener



TANK CLEANING PRODUCT OFFERING

FIXED INSTALLATION - EXTERNAL DRIVE UNIT



Model :
SC 20 's

Drive unit : Electrical

Tank size :
Small / medium

Typical application:
Paint, Chemical, IBC,
etc.

Model :
SC 40 's

Drive unit : Turbine,
Electrical or Air

Tank size :
Medium/large

Typical application :
Ethanol, Paper,
Chemical, etc.

Model :
SC 30 's

Drive unit : Turbine,
Electrical or Air

Tank size :
Medium/Very large

Typical application :
Chemical, Oil, etc.

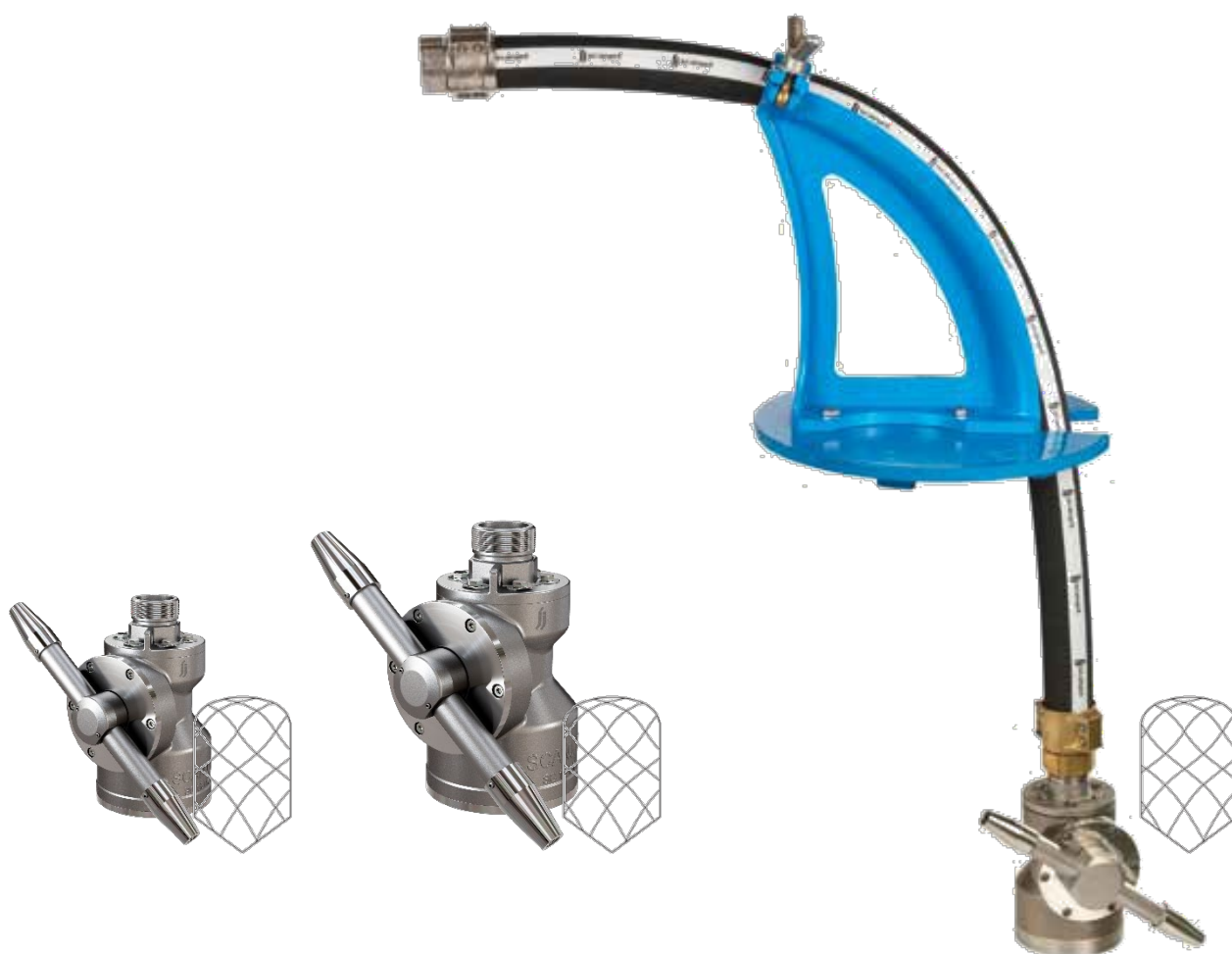
Model :
SC 60 's

Drive unit : Air or
Hydraulic

Tank size :
Large/Very large

Typical application :
Chemical, oil, etc.

FIXED AND PORTABLE INSTALLATION – INTERNAL GEAR



Model :
SC 15TW

Drive unit : Turbine

Tank size :
Medium/large

Typical application :
Transportation,
Chemical, oil, etc.

Model :
SC 45TW

Drive unit : Turbine

Tank size :
Large / Very large

Typical application :
Chemical, oil, etc.

Scanjet delivers full program of hoses in all length and material / connection as well as hose saddle to support and protect the hose when the machine is used as portable tank cleaning solution.

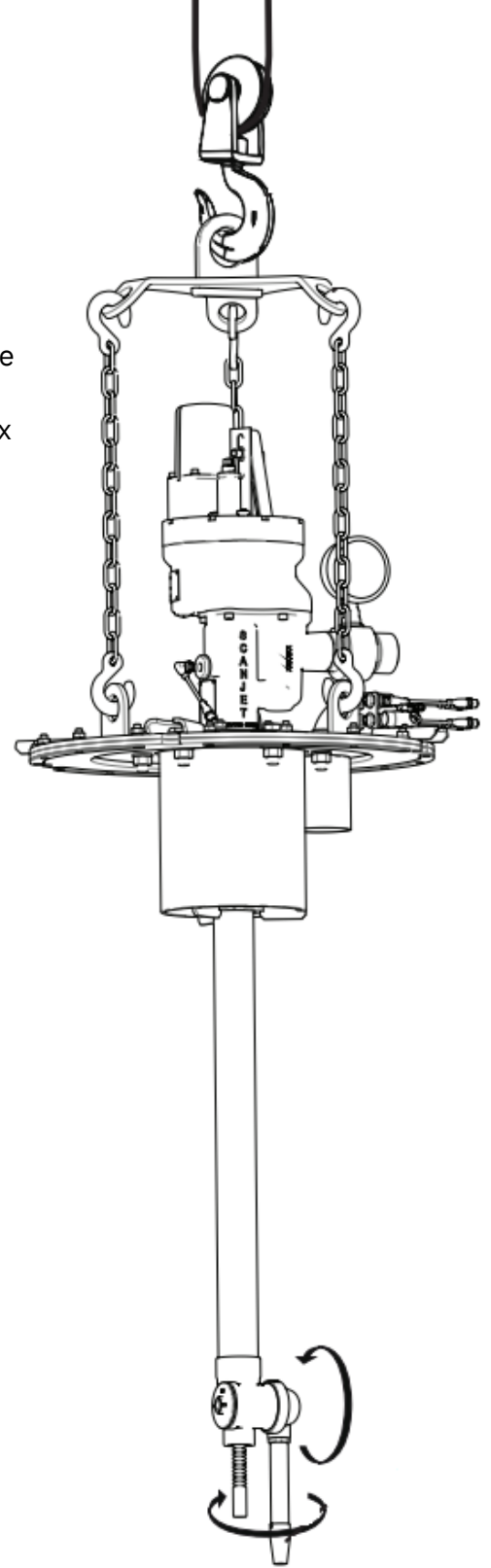
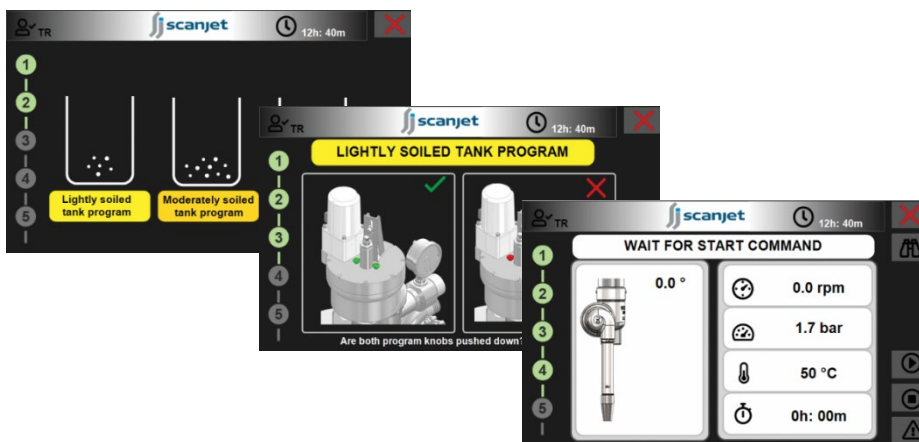
STANDARD SOLUTION DOESN ' T FIT ALL

At Scanjet, we take pride in delivering the ideal solution for each customer recognizing that not every need is met with a standard approach. That's why we offer equipment in specialized materials like Super Duplex and develop unique projects tailored to specific requirements.

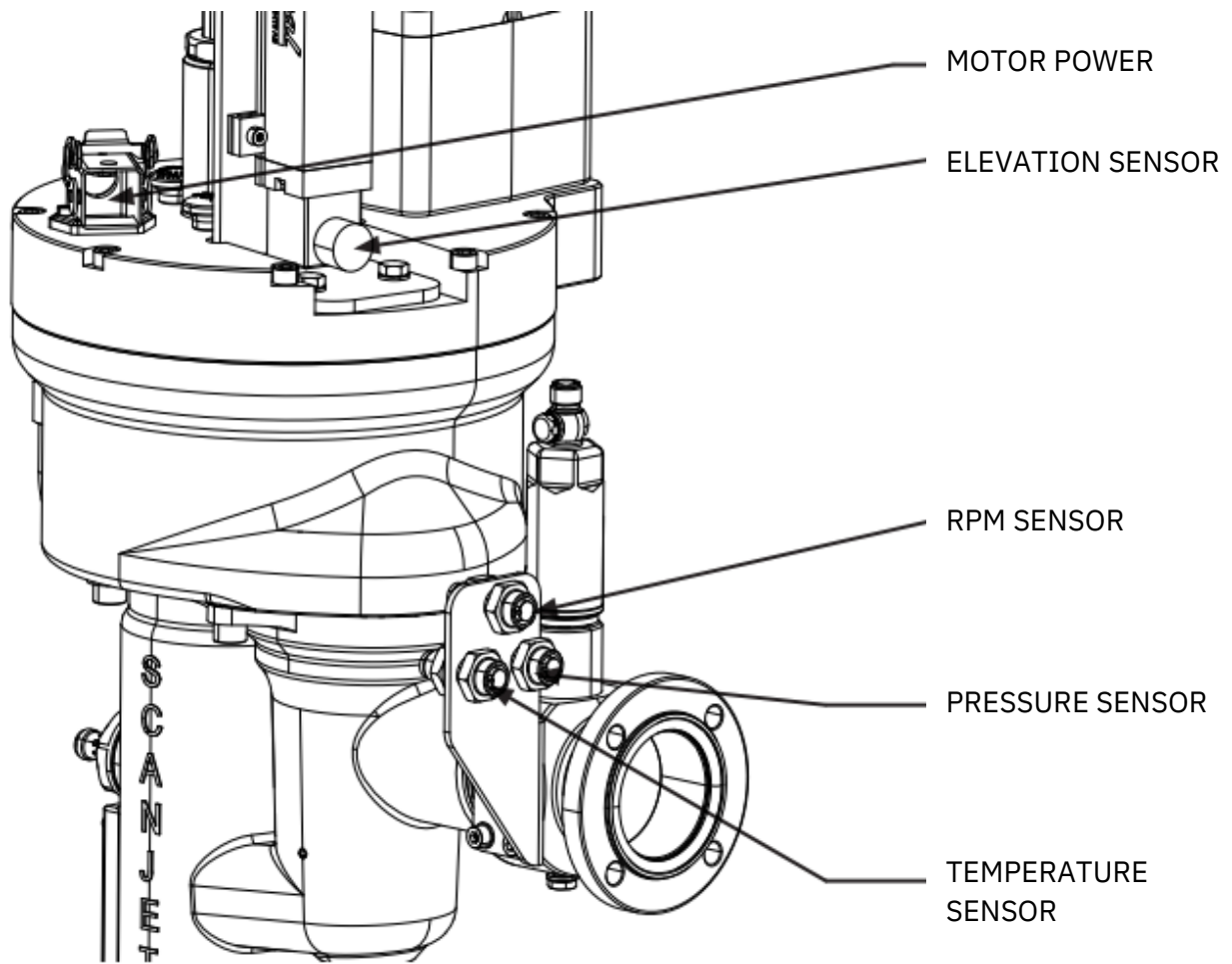
EXAMPLE

When a client required an easy-to-operate system for cleaning railcars, we designed a custom HMI solution where the SC 30E cleaning nozzle could be controlled based on tank contamination levels.

Additional sensors were installed to closely monitor rotation speed, temperature, and pressure, along with ultrasonic sensors to detect the CIP level in the tank, preventing overflow through automatic shutdown, all built-in to a custom-made HMI solution.



CUSTOM- MADE SOLUTION



ANOTHER CASE

For a large juice tank, we delivered a custom HMI solution that enabled the client to create unique CIP programs.

Again, additional sensors were integrated to monitor key parameters, ensuring safe and efficient operation.

CHALLENGE US
-WE HAVE THE RIGHT SOLUTION FOR YOU

COMPLETE OFFERING FOR YOUR TANK

SCANCUTTER - CUTTING TOOL

The SC SCANCUT-235-H is a hydraulic cutting tool designed for precision cutting of 160mm (6.3”) or 88mm (3.4”) diameter holes in single or double floating roof tanks, ideal for installing Scanjet cleaning machines like the SC 60H models. It’s especially useful when existing tank openings, such as those from support legs, don’t allow for effective cleaning.



SCANVENT

The SCANVENT valve serves as a pressure/vacuum valve that enhances safety in your tank by effectively releasing pressure and vacuum during operation. It features a straightforward, low-maintenance design that combines magnet power and air brakes in a patented, non-oscillating solution. Maintenance is streamlined, allowing the entire internal unit to be removed and replaced as a single unit, with staff easily able to service seats and discs without needing factory support or expensive service engineers

GAS-FREEING FAN

The Scanjet SC F90A is a high-performance, portable gas-freeing fan designed specifically for use on tanks. It is versatile enough to be used on a wide range of vessels of different types and sizes.

Powered by an air-driven motor, the SC F90A is straightforward to operate simply open the air supply valve to begin gas freeing, as the motor connects directly to the impeller for efficient functionality.



SCANRAD SC R8

The Scanjet SCANRAD SC R8 is a robust and reliable radar for level measurement in tanks, designed for harsh industrial environments. This high-performance instrument accurately tracks liquid levels during operations. As a non-contact radar level transmitter operating at 80 GHz with a half power beam width of 3°, it is intrinsically safe for hazardous areas and functions as a 2-wire device using the 4-20 mA HART protocol.

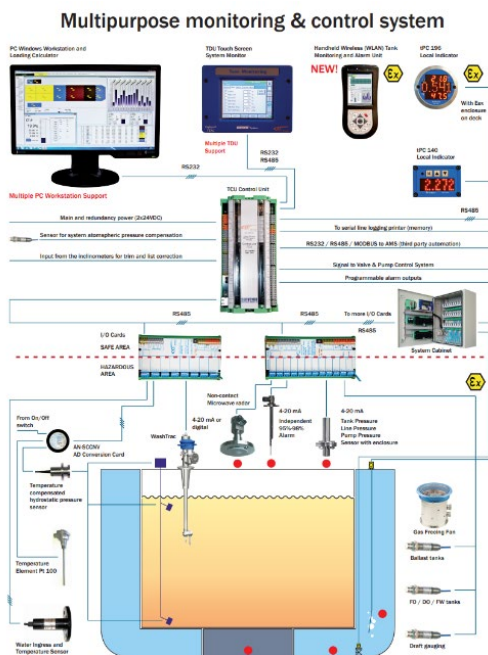
Its software filters echoes from obstacles and disturbances for precise readings, and its high bandwidth enables effective monitoring of liquid levels close to the tank bottom and roof.



TANK MANAGEMENT - ITAMA

An industry first, the ITAMA total tank management system addresses every aspect of industrial tank set-up, tank management, and measurement. Central to this system is the integration of key elements of industrial tank maintenance, such as tank cleaning machines, Scanvent valves, tank level gauging equipment, and inert gas systems.

The ITAMA concept includes automatic tank monitoring, alarm and control, remote valve and pump control, fixed and portable tank cleaning, Scanvent valves, gas-freeing equipment, inert gas systems, oil-discharge monitoring, and vapor emission control.



Many of the tank equipment solutions manufactured by SCANJET are designed to integrate various products within the ITAMA concept, providing direct real-time monitoring, safe operations, and control in demanding industrial environments. Part of the equipment in the ITAMA package

- WashTrac to monitor rotation of Cleaning machines.
- Level monitoring
- Pressure transmitters
- Temperature transmitters
- Water Ingress sensors



GOTHENBURG | SWEDEN
Head Office
+46 313 387 530
www.scanjet.net
info@scanjet.net

 **scanjet**
an Alfa Laval brand